



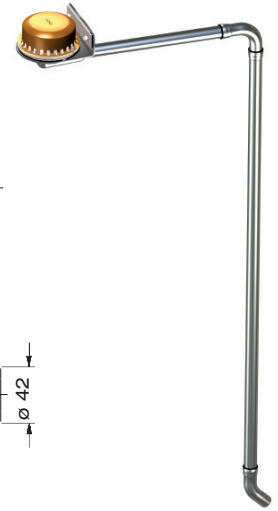
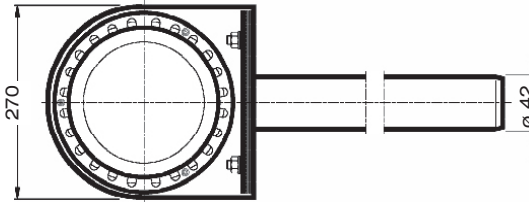
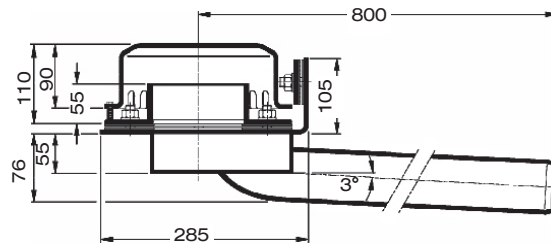
Choose drain for piece list on page one!

DN 40

**LX682-1X**

Drain Art.-No. 01383.040X  
Weight: 4,7 kg

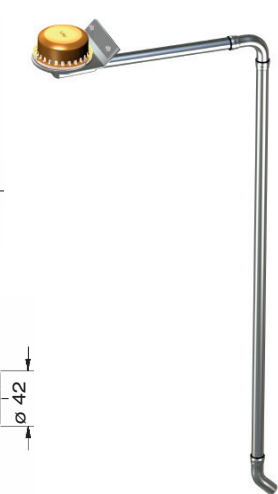
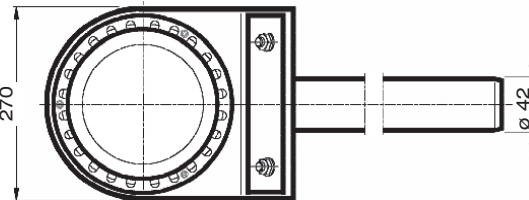
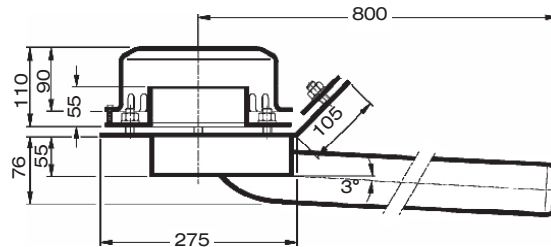
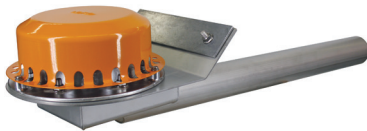
**Series 79 (RD)**  
**clamping flange 90°**  
for plastic roofing sheets



**LX682-2X**

Drain Art.-No. 01381.040X  
Weight: 4,7 kg

**Series 79 (RD)**  
**clamping flange 45°**  
for bituminous roofing sheets

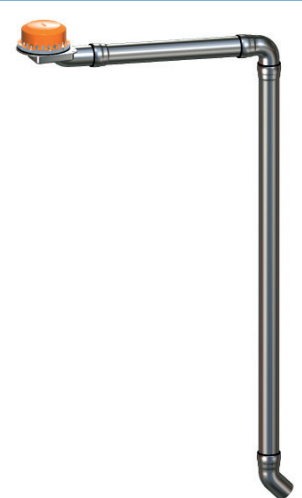
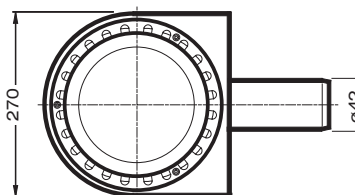
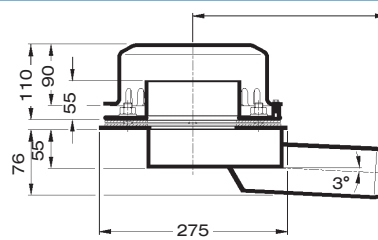


**LX682-4X**

Drain Art.-No. 01394.040X  
Weight: 5,7 kg

**Series 88**  
**clamping flange**  
**without raised edge**

for bituminous and plastic roofing sheets



**Please note:**

For drainage systems with siphonic flow it is vital that only LORO-X pipes and fittings in the combination as indicated are used. Mixture or exchange of system parts may result in lower discharge capacities! The height of the downpipe must be a min. 4.2m for the indicated capacity to be obtained. If roof drain and downpipe are fitted by different crews, then do follow the system setup acc. to the LX-data sheet at [www.loro-x.com](http://www.loro-x.com)

**Heat tracing:** Lorowerk recommends to check all drains and pipes with regard to their frost-sensibility. Where necessary, these parts should be upgraded with heat tracing.